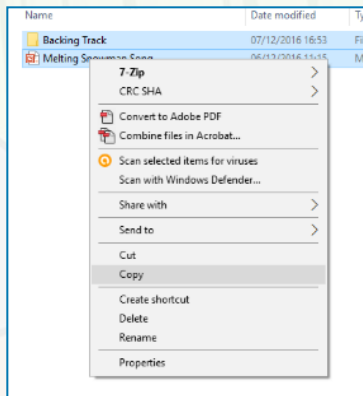
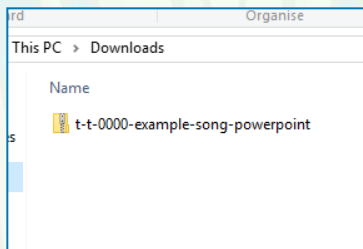
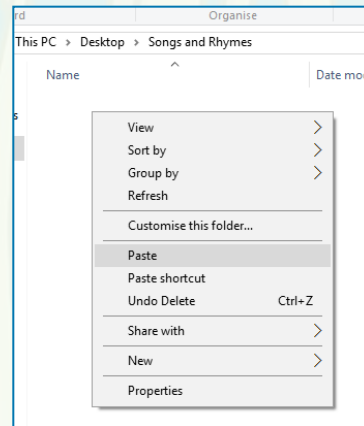


# Guidance for Video/Audio in PowerPoints

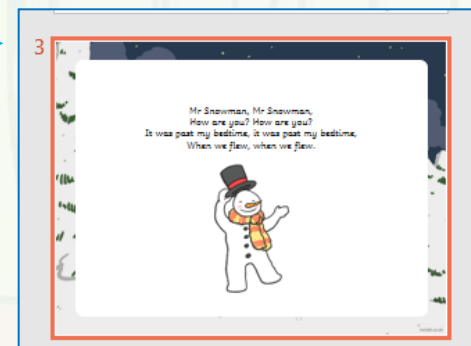
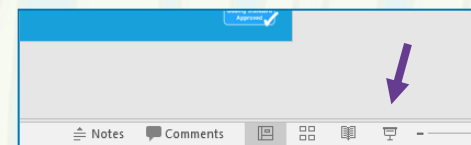
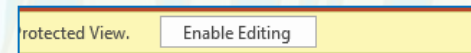
1. Open the folder and copy all the files.



2. Paste the copied files into a new folder.



3. Open the PowerPoint file, enable editing and enter presentation mode (start the slide show).



Please note the embedded audio may not be compatible with early versions of PowerPoint.

You may wish to delete this slide before beginning the presentation.

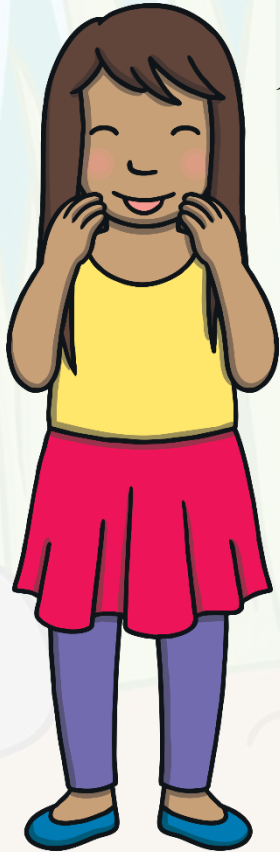


y saying /igh/

# The Minibeast Party



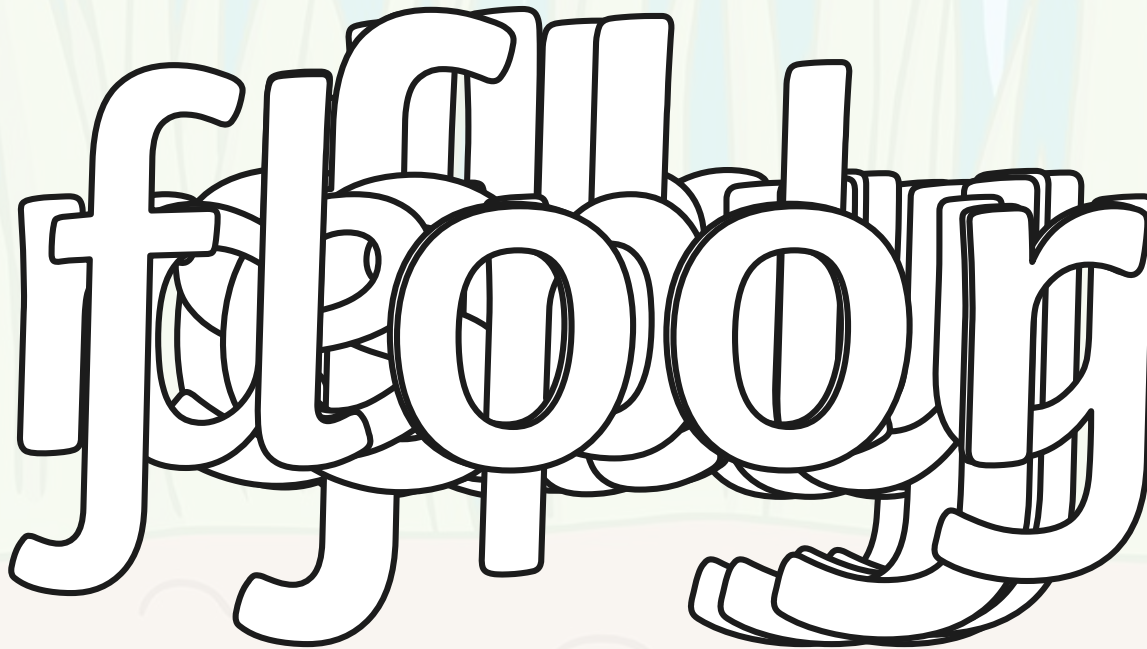
Let's practise reading some of this week's focus words.



campy

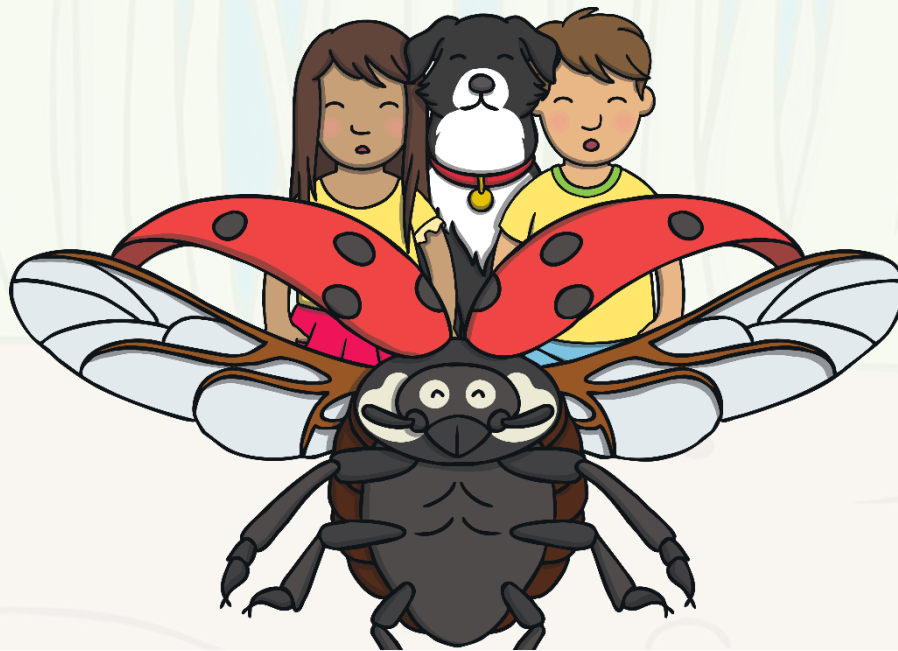


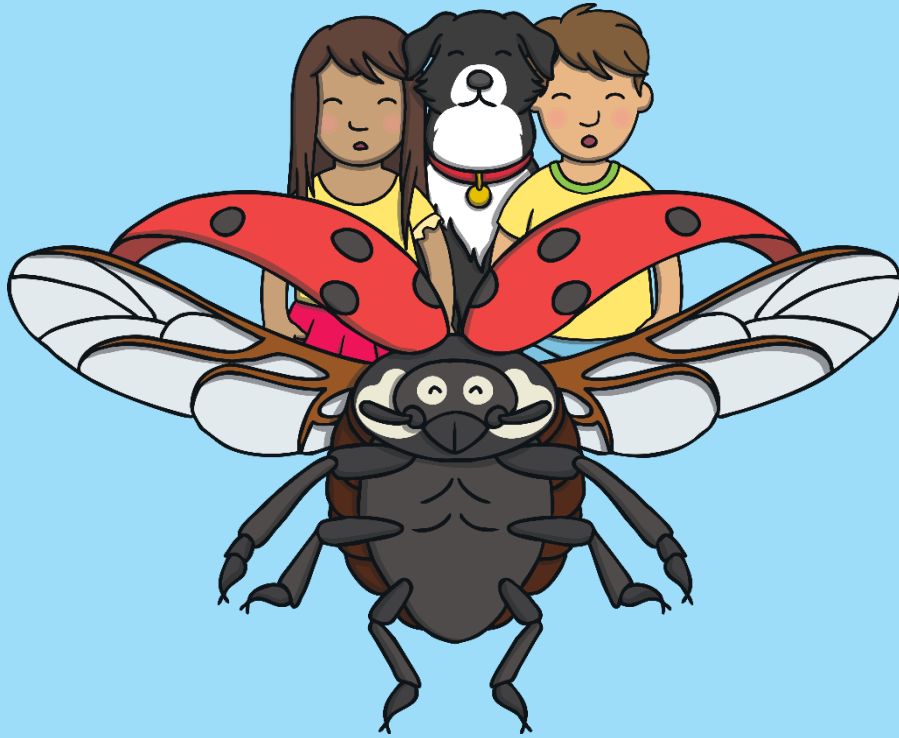
Now, let's write them on a whiteboard or paper.



Today, we are learning to write a sentence containing **y** saying /igh/ words.

We are also learning that every sentence must begin with a capital letter and end with a full stop.





Kit, Sam and Ben were flying through the air on the back of a ladybird. “Woo hoo!” shrieked Sam. “This is fun!”  
“I can see the whole garden!” shouted Kit.



The ladybird landed in another part of the garden. There were many insects gathered there. “Welcome,” said the ladybird. “Come and meet all of my friends.”



What kind of minibeast is Lucy?



“Hello,” said Kit and Sam nervously.  
“Don’t be afraid,” said the ladybird. “I’m Lucy and this is Billy, Betty and Belinda. We’re having a party!”



A sentence is a set of words which makes up a complete thought. It could be a statement, question, exclamation, or command.

The butterfly is on the floor.

Remind children that every sentence must begin with a capital letter and end with a full stop.



Click me for Kit's teaching tips!



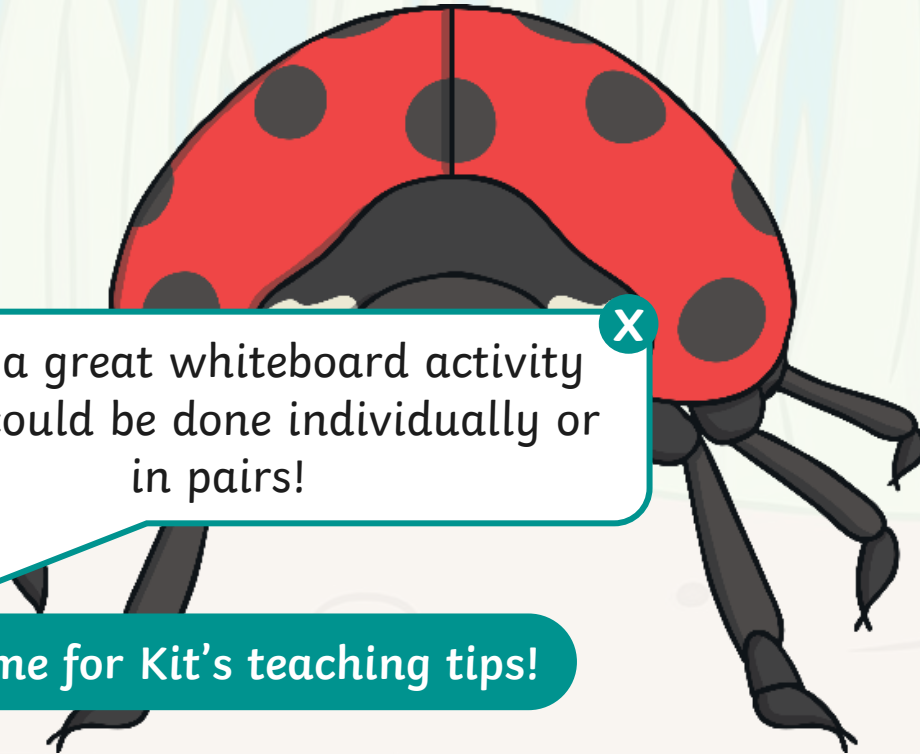
# Insect Party

Write a sentence using a **y** saying /igh/ word. Remember to use a capital letter and a full stop.

This is a great whiteboard activity which could be done individually or in pairs!



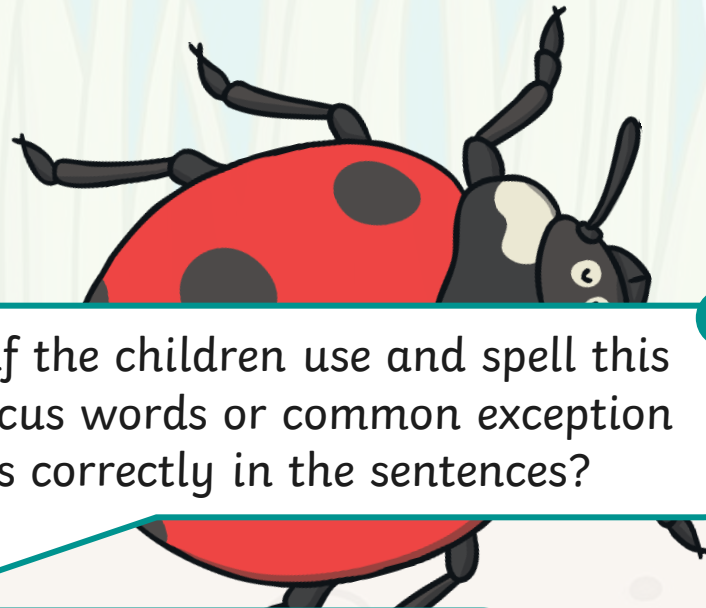
Click me for Kit's teaching tips!





# Sentence Scribers

What does the ladybird say to Kit, Sam and Ben? Write down the sentences. Remember to start each sentence with a capital letter and end with a full stop.



Observe if the children use and spell this week's focus words or common exception words correctly in the sentences?



Click me for Kit's teaching tips!

Come off the  
floor and fly  
with me.



Play



Show Sentence



Let us see  
what we can  
spy.



Play



Show Sentence



We might have  
to be sly.



Play



Show Sentence





As the party finished, they all collapsed on the grass. “I think it’s time for party food,” said Lucy. “Who’s hungry?”  
“Me!” replied Kit and Sam.





“Thanks for the honey, Betty,” said Kit. “It has been great to meet you all. I thought our minibeast adventure was scary at first but it has turned out to be really fun.”



Sam got out the magic map. “It’s time for us to go,” she said, “but we’ll be back to visit again – especially now we know that you live just at the end of our garden!”

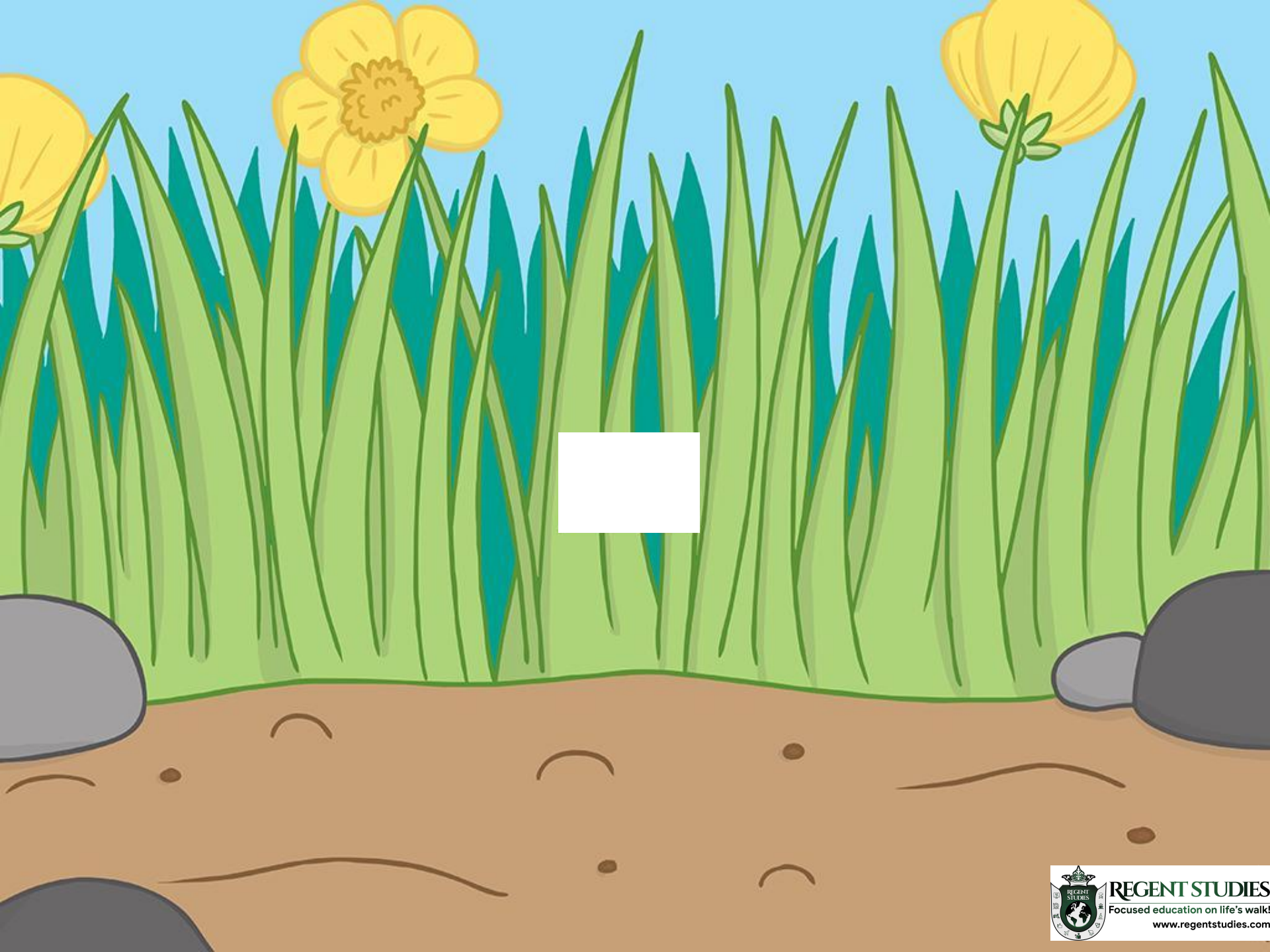
Today, we have learnt to write sentences with words containing...

y

saying /igh/

We have also learnt that every sentence must begin with a capital letter and end with a full stop.





# Minibeast Party Invitation



Level 6

Write a new invitation to the minibeast party. Think about what fun things there might be at the party and try to describe them.

Make sure you begin your sentences with capital letters and end them with full stops.

Challenge: Can you include any 'y' saying /igh words in your sentences?

## Minibeast Party



---

---

---

---

---

---

---

